

# PRESENTATION OF KUJAWSKO-POMORSKIE REGION AND ITS ECONOMY

**Marek Ryłow. Toruń, 11.06.2024**

**Bureau for Economic and Investment Promotion**  
*Investors and Exporters Assistance Centre*

**Marshal's Office of the Kujawsko-Pomorskie Region**



# Area & Population



Województwo  
Kujawsko-Pomorskie

Area - **17 972 sq km**

Inhabitants - **1 996 000** (as of 30.06.2023)

(source: [www.gus.bydgoszcz.pl](http://www.gus.bydgoszcz.pl); 03.2024)



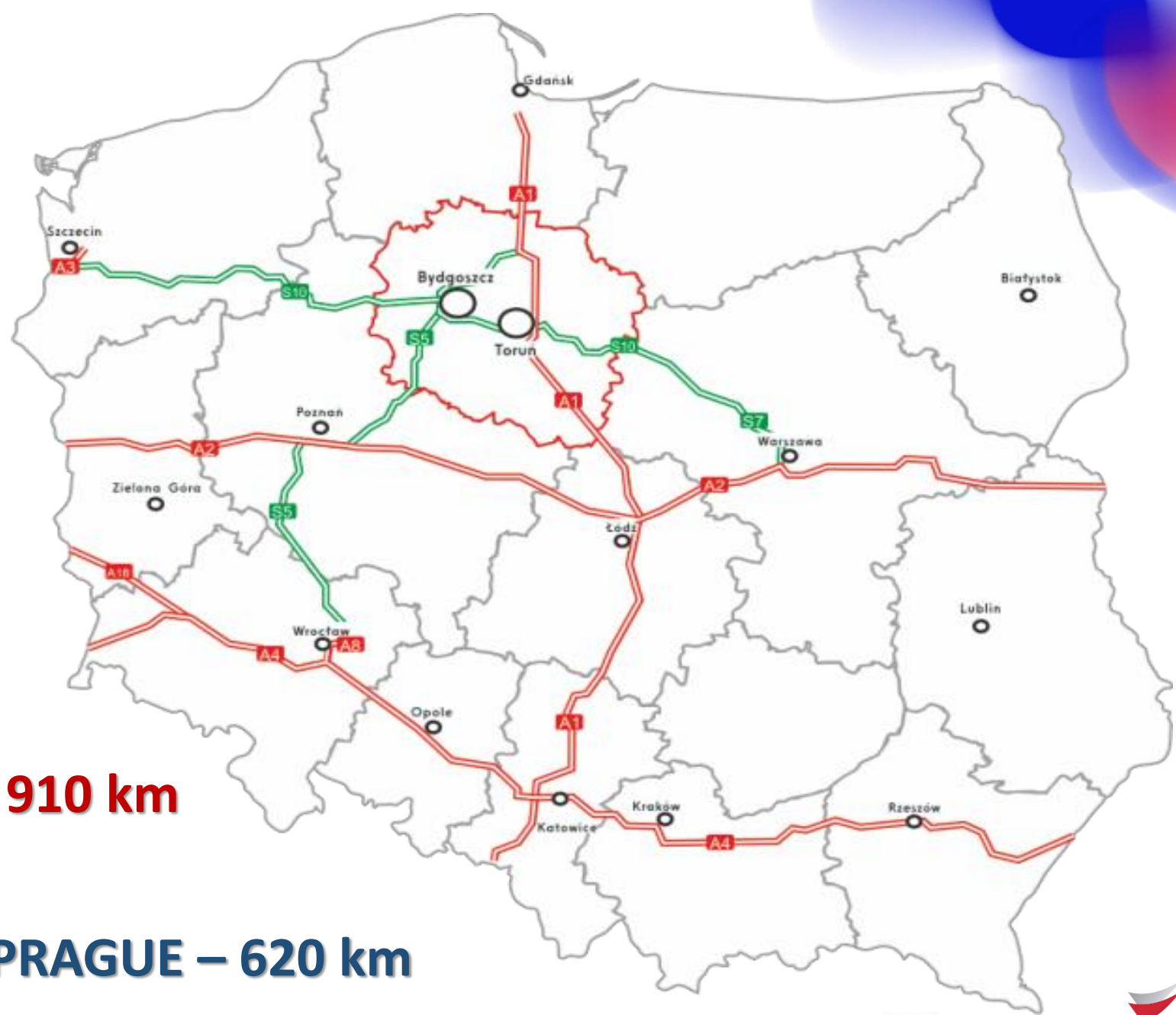
# National Transport Network

**HAMBURG – 670 km**

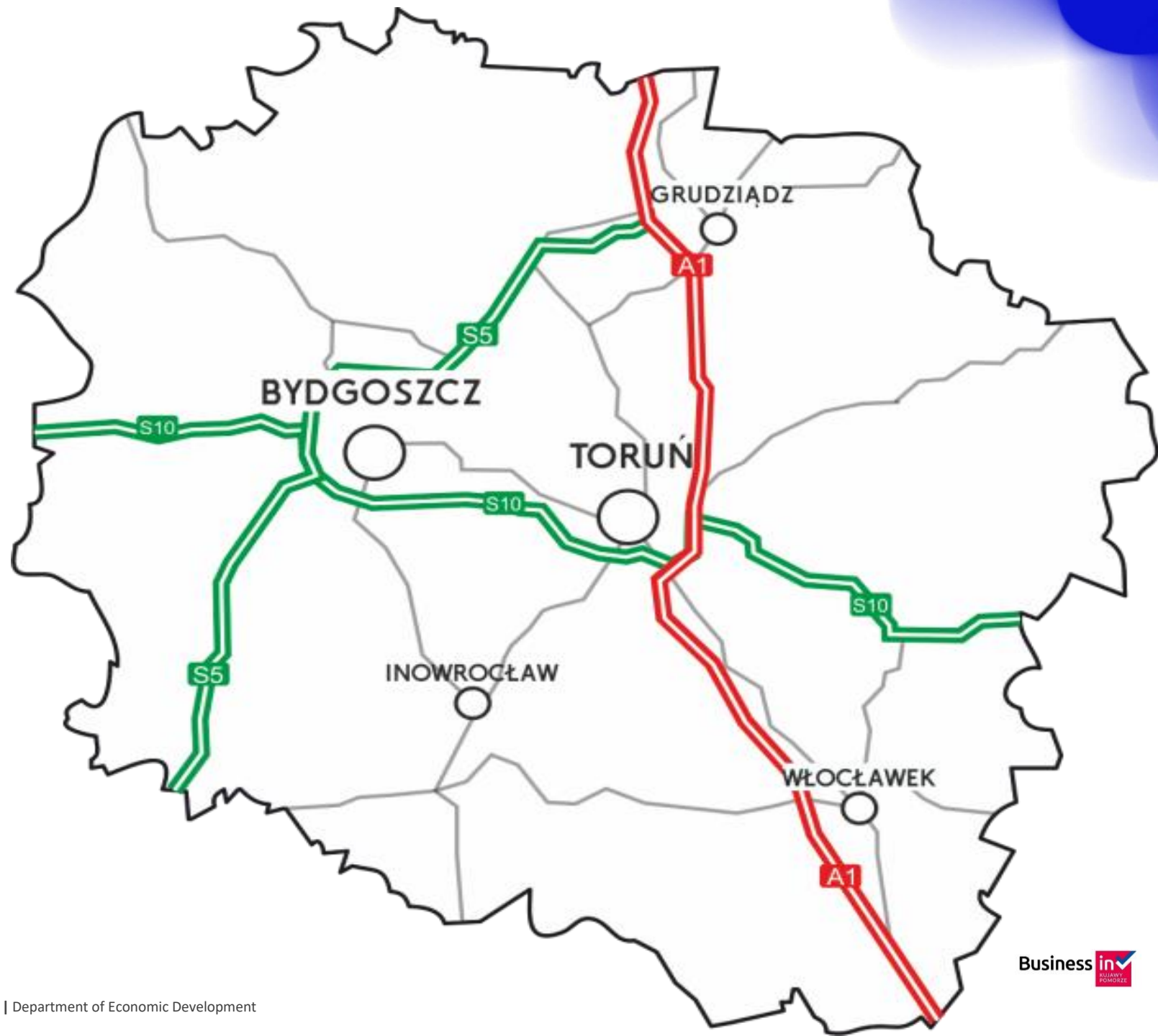
**BERLIN – 400 km**

**FRANKFURT AM MAIN – 910 km**

**PRAGUE – 620 km**



# Regional Transport Network



# Bydgoszcz&Toruń. Business, culture and education hub for the Region.

**POPULATION – ca 1 mln**

*in the radius of 50 km*

- 3 UNIVERSITIES
- 1 UNIVERSITY OF TECHNOLOGY
- INTERNATIONAL AIRPORT
- INTEGRATED COMMUTER RAIL SYSTEM
- MODERN OFFICE SPACES
- *GREENFIELD AND BROWNFIELD INVESTMENT OFFERS*

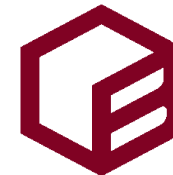


# Science and R&D institutions

16 institutions  
Over 50 000 students



NICOLAUS COPERNICUS  
UNIVERSITY  
IN TORUŃ



BYDGOSZCZ UNIVERSITY  
OF SCIENCE AND TECHNOLOGY



UNIWERSYTET  
WSB **MERITO**  
TORUŃ

-  UNIVERSITIES
-  PUBLIC COLLEGES
-  PRIVATE COLLEGES
-  LABORATORIES



Bydgoszcz / Toruń  
to the nearest Baltic Sea Port,  
Gdańsk (DCT)

**179 km** = app. 1.40 min. drive

Reach us  
by plane, by ship

Bydgoszcz Intl. Airport – Toruń City Centre  
**55 km** = app. 50 minutes by car



**YOUR NEIGHBOURS.  
CUSTOMERS/SUPPLIERS**

**BUSINESS  
IN KUJAWSKO-POMORSKIE REGION**





# Key economy sectors in Kujawy Pomorze



# INDUSTRIAL PARKS AND ECONOMIC ACTIVITY ZONES

- 1 Włocławek Economic Development Zone Industrial and Technology Park
- 2 Nadnotecki Industrial Park in Paterek
- 3 Płużnica Investment Park
- 4 Bydgoszcz Industrial and Technology Park
- 5 Vistula Park Świecie
- 6 Industrial Park in Sołec Kujawski
- 7 Grudziądz Industrial Park
- 8 Toruń Technology Park with the Technology Transfer Centre
- 9 Vistula Park II
- 10 Brzeska Economic Zone
- 11 Industrial and Technology Park in Golub Dobrzyń
- 12 Sępólno Economic Activity Zone
- 13 Industrial Zone in Koronowo
- 14 Łysomice sub-zone of the Pomorskie Special Economic Zone (Crystal Park Ostaszewo)
- 15 Inowrocław Economic Area



# Major Foreign Investors



**PRETTL**  
GROUP



**ROSSMANN**



Nordzucker



**POLIPOL**



**Klose**



schumacher



**ThyssenKrupp**



STIEGELMEYER



**Bonduelle**

**Atos**

**LAFARGE**

**Shapers**



Carrefour



**CSK**  
Food & Beverage

**Raben**



Visscher-Caravella



Business **in**  
KUJAWY  
POMORSKIE

**Invest**  
in Kujawsko-Pomorskie

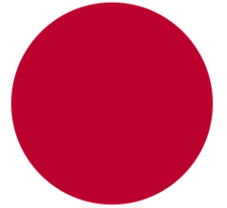


# Major Foreign Investors



# Crystal Park Ostaszewo. Japanese capital 2006

**SHARP**



**TENSHO**



**ORION**



**SANRITZ**

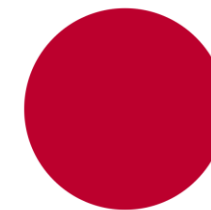


**Nitto**



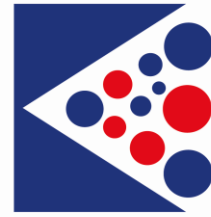
# Crystal Park Ostaszewo. Japanese capital 2024

# SHARP



**SCPL**  
*Sohbi Craft Poland*

# Bydgoszcz Industrial Cluster – Tool Valley



BYDGOSKI KLASTER  
PRZEMYSŁOWY  
DOLINA NARZĘDZIOWA

It's a chain of suppliers consisting of over 100 Polish companies co-operating with similar international and national institutions (below)



# How about the business support?



Polish Investment  
& Trade Agency  
PFR Group



Polska  
Strefa Inwestycji



POMORSKA  
SPECJALNA STREFA  
EKONOMICZNA



BYDGOSZCZ  
REGIONAL  
DEVELOPMENT  
AGENCY



Toruńska Agencja  
Rozwoju Regionalnego S.A.



Invest  
in Kujawsko-Pomorskie

Business





# Kujawsko-Pomorskie

- Bureau for Economic and Investment Promotion
- Investors and Exporters Assistance Centre
- how to make regional business internationally active – proExport
- foreign investors - **proFDI**



# Public Aid

## Central Level

- ✓ support for investments of exceptional importance for national economy, grants directed to investments in high tech / innovation in production, business processing, R&D establishments

## Regional level

- ✓ **partial financing of your investment from Regional Operational Program of Kujawsko-Pomorskie Voivodeship for 2021-2027**
- ✓ partial financing of newly created workplaces in the case of employing the unemployed and disabled persons + free recruitment process and employee training system in the scope of supporting instruments of the employment Agency
- ✓ **Support via Special Economic Zone, PIT or CIT Tax exemption: 40% for large | 50 % medium | 60% small and micro of incurred qualified costs**

## Local level

- ✓ possible exemption from property tax

# Other support instruments for local entities/investors

- K-P Loan Fund KPFR Sp. z o.o. (for SMEs) include:
  - real estate purchase – investment financing – support for social economy establishments - revolving loans
- KPFR Support for credit sureties (for SMEs)
- Possible support from the K-P EU Funds for 2022-2027 perspective
- Job Centres (WUP/PUP)



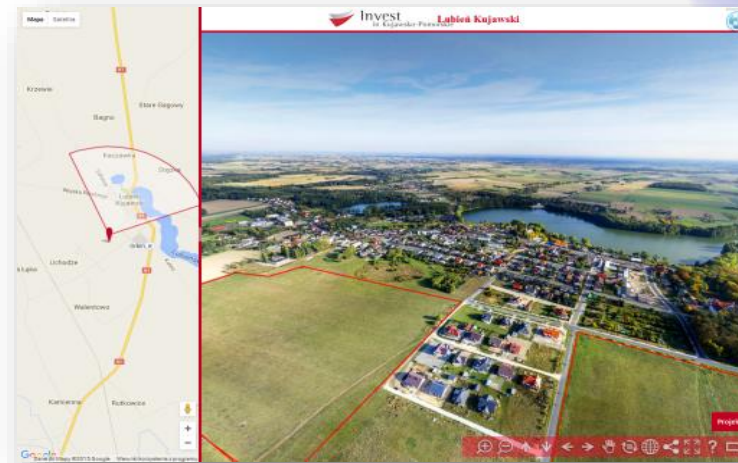
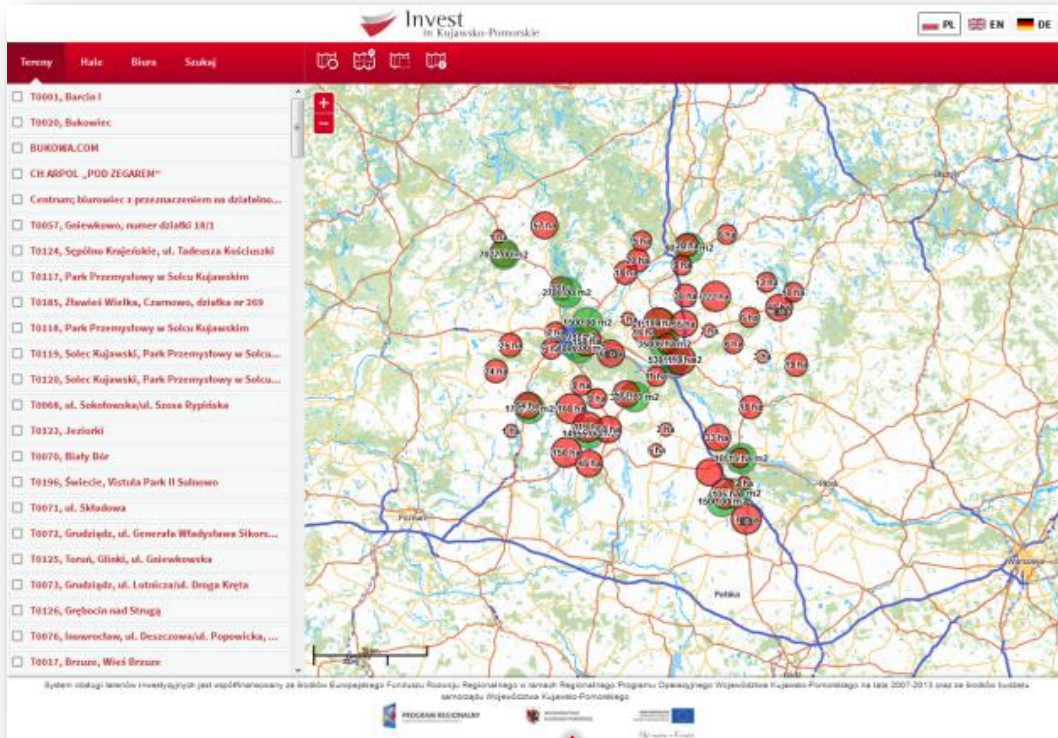
# Our Publications *(examples)*



Export products catalogue, Guidebook for future exporters, Investment opportunities in the region, and sectoral brochures:

Logistics – Health&Spa – Plastics processing/Automotive – Food Industry

# INVESTMENT AREAS DATABASE



[www.coimapa.kujawsko-pomorskie.pl](http://www.coimapa.kujawsko-pomorskie.pl)

**Over 200  
Greenfield  
and over 40  
brownfield  
offers!**



Business **in**  
KUJAWY  
POMORSKIE

**Invest**  
in Kujawsko-Pomorskie

# Kujawsko-Pomorskie Exporters and Investors Assistance Centre

Cezar Buczyński

[c.buczynski@kujawsko-pomorskie.pl](mailto:c.buczynski@kujawsko-pomorskie.pl)

Tel. +48 56 62 18 319;

+48 56 668 856 888

Marek Ryłow

[m.rylow@kujawsko-pomorskie.pl](mailto:m.rylow@kujawsko-pomorskie.pl)

Tel. +48 608 453 957

Piotr Mazur

[piotr.mazur@kujawsko-pomorskie.pl](mailto:piotr.mazur@kujawsko-pomorskie.pl)

Tel. +48 56 62 15 813

# Thank you!

Business in



Invest

in Kujawsko-Pomorskie